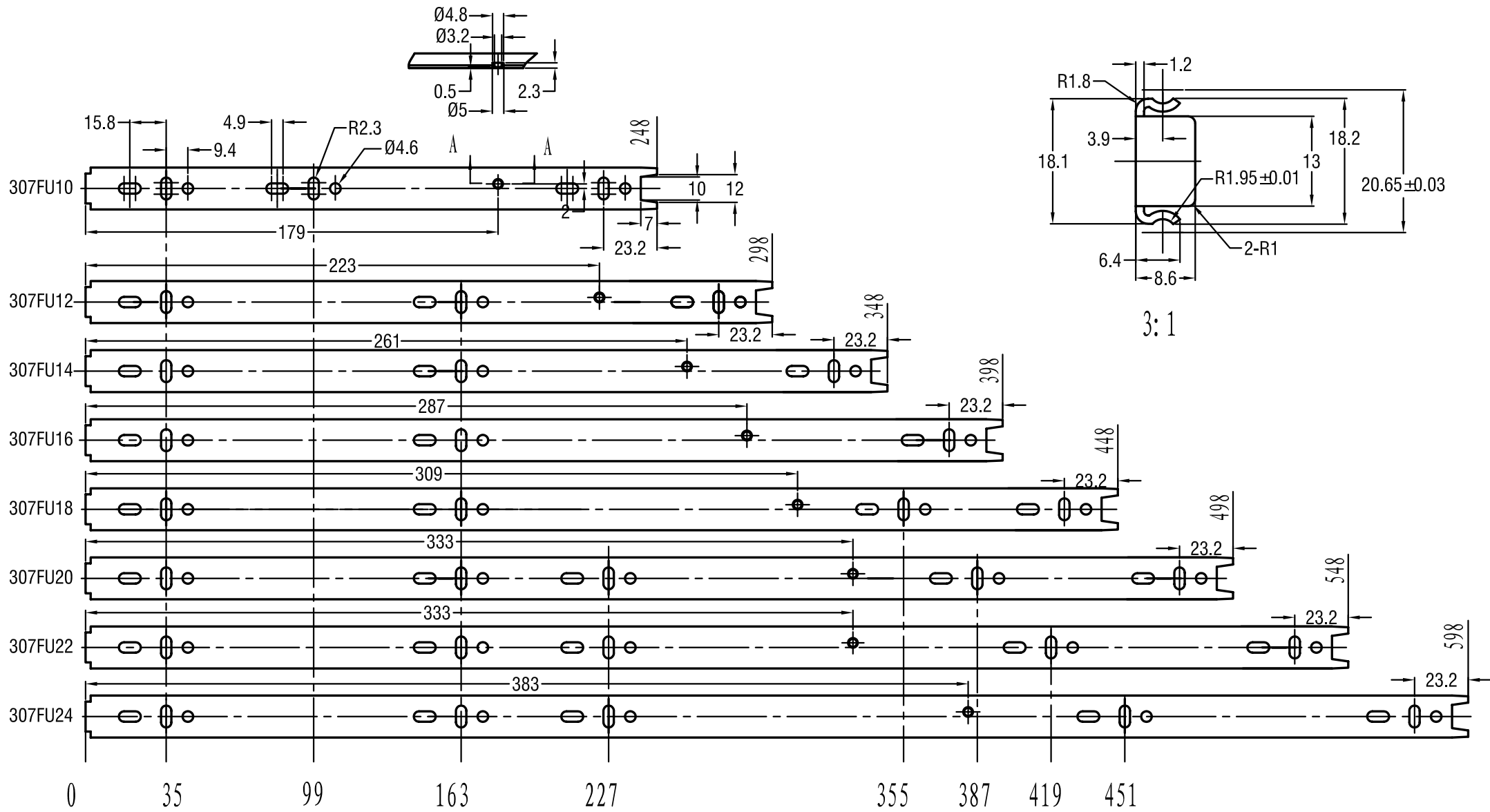
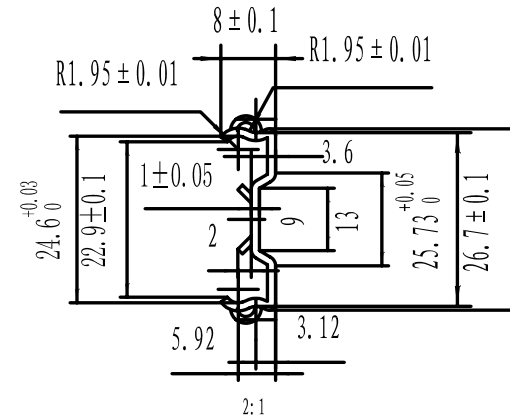
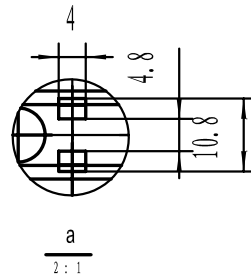
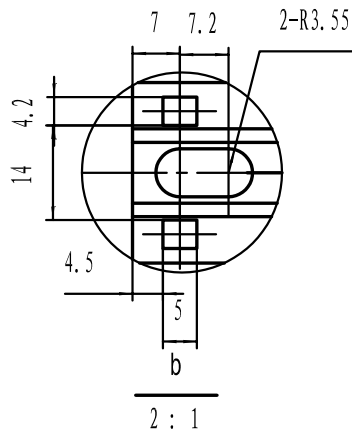
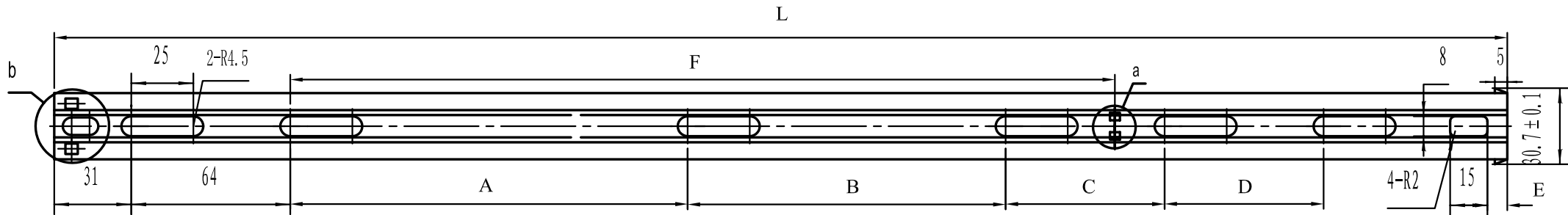


REV B BY:	DRAWN BY:	DATE:	SCALE:	HARDWARE RESOURCES 4319 MARLENA ST. BOSSIER CITY, LA 71111
REV B DATE:	John Lal	01/08/05		
REV A BY:	TOLERANCES UNLESS OTHERWISE SPECIFIED DIMENSIONS AND TOLERANCING ARE IN MILLIMETERS			PART NAME:
REV A DATE:				MATERIAL:
SHT:	1 OF 5			ITEM NUMBER:
				PLATING:

Drawer Slide
Steel
307FU series
Zinc

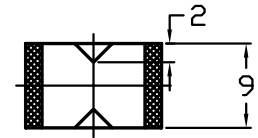
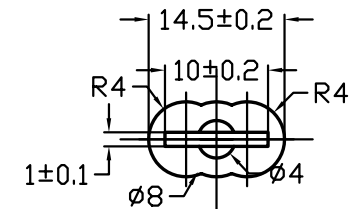
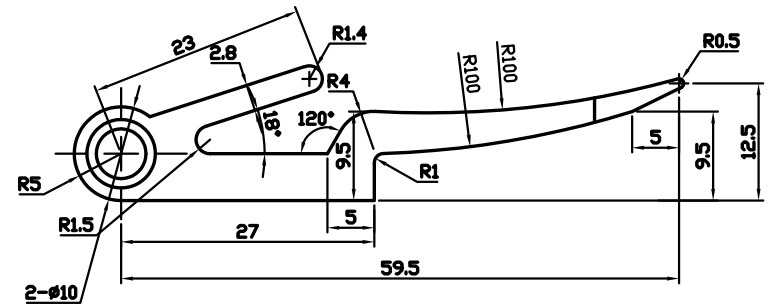
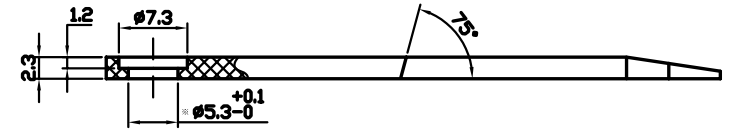
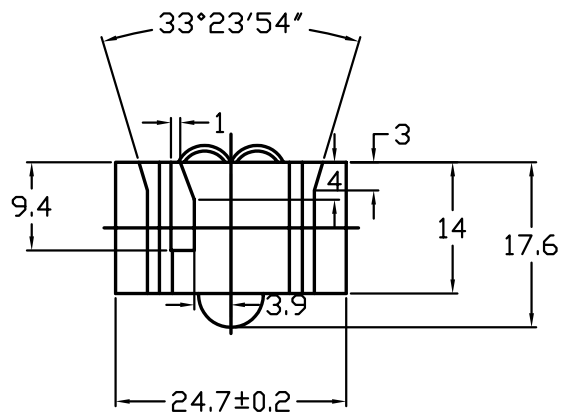
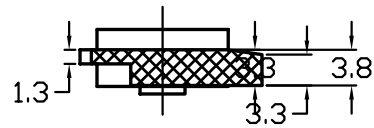
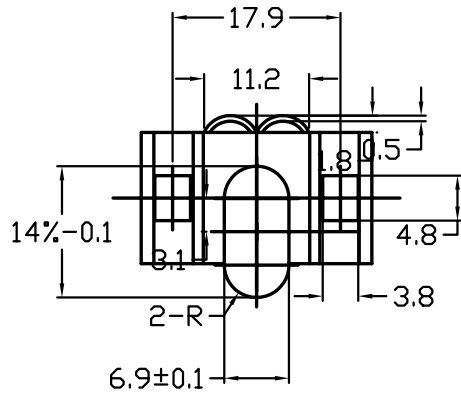
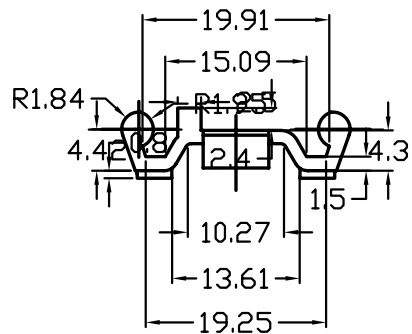


REV B BY:	DRAWN BY: John Lai	DATE: 01/08/05	SCALE:	HARDWARE RESOURCES 4319 MARLENA ST, BOSSIER CITY, LA 71111
REV B DATE:	TOLERANCES UNLESS OTHERWISE SPECIFIED DIMENSIONS AND TOLERANCING ARE IN MILLIMETERS			
REV A BY:				MATERIAL: Steel
REV A DATE:				ITEM NUMBER: 307FU series
SHT: 2 OF 5				PLATING: Zinc

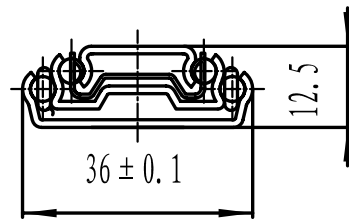
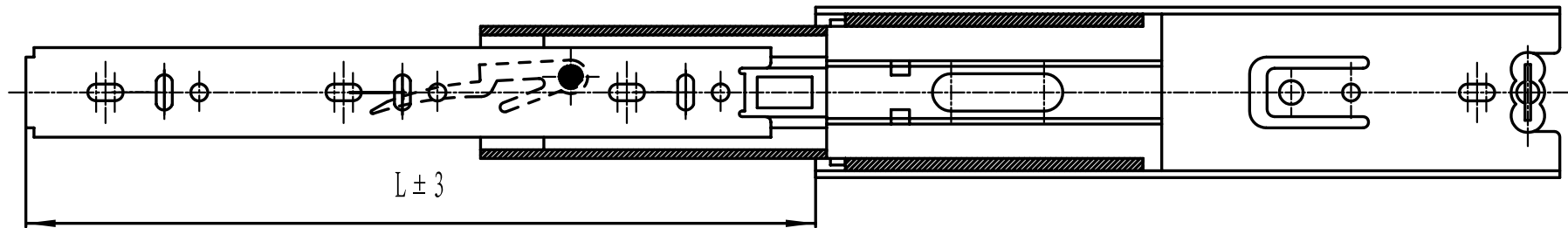


ITEM #	L	A	B	C	D	E	F
307FU10	235	94	0	0	0	0	89
307FU12	285	136	0	0	0	0	115
307FU14	335	160	47	0	0	0	153
307FU16	385	160	64	0	0	0	194
307FU18	435	160	128	0	0	0	235
307FU20	485	160	128	64	0	0	261
307FU22	535	160	128	64	47	0	320
307FU24	585	160	128	64	64	8	332

REV B BY:	DRAWN BY: John Lal	DATE: 01/08/05	SCALE:	HARDWARE RESOURCES 4319 MARLENA ST, BOSSIER CITY, LA 71111
REV B DATE:	<u>TOLERANCES</u> UNLESS OTHERWISE SPECIFIED DIMENSIONS AND TOLERANCING ARE IN MILLIMETERS			
REV A BY:				MATERIAL: Steel
REV A DATE:				ITEM NUMBER: 307FU series
SHT: 3 OF 5				PLATING: Zinc



REV B BY:	DRAWN BY: John Lai	DATE: 01/08/05	SCALE:	HARDWARE RESOURCES 4319 MARLENA ST, BOSSIER CITY, LA 71111 PART NAME: Drawer Slide MATERIAL: Steel ITEM NUMBER: 307FU series PLATING: Black
REV B DATE:	<u>TOLERANCES</u> UNLESS OTHERWISE SPECIFIED DIMENSIONS AND TOLERANCING ARE IN MILLIMETERS			
REV A BY:				
REV A DATE:				
SHT: 4 OF 5				



ITEM #	L (mm)
307FU10	258
307FU12	308
307FU14	358
307FU16	408
307FU18	458
307FU20	508
307FU22	558
307FU24	608

REV B BY:	DRAWN BY: John Lai	DATE: 01/08/05	SCALE:	HARDWARE RESOURCES 4319 MARLENA ST, BOSSIER CITY, LA 71111
REV B DATE:	<u>TOLERANCES</u> UNLESS OTHERWISE SPECIFIED DIMENSIONS AND TOLERANCING ARE IN MILLIMETERS			
REV A BY:				MATERIAL: Steel
REV A DATE:				ITEM NUMBER: 307FU series
SHT: 4 OF 5				PLATING: Zinc