

CRAFTMADE

LIGHTING

ASSEMBLY & INSTALLATION INSTRUCTIONS FOR #44975-GT

Please read carefully and save these instructions, as you may need them at a later date.

CAUTION

Turn off the main power at the circuit breaker before installing the fixture, in order to prevent possible shock.

GENERAL

All electrical connections must be in accordance with local and National Electrical Code (N.E.C.) standards. If you are unfamiliar with proper electrical wiring connections obtain the services of a qualified electrician.

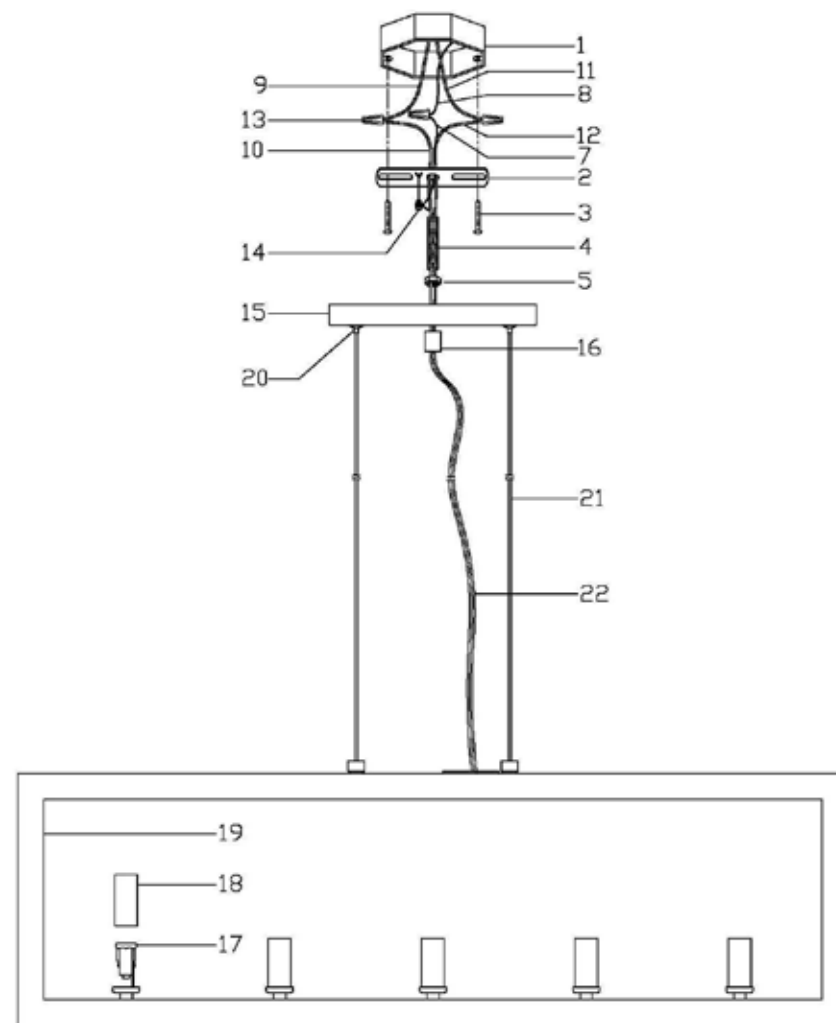
Remove the fixture and the mounting package from the box and make sure that no parts are missing by referencing the illustrations on the installation instructions.

ASSEMBLY AND INSTALLATION

1. Take the parts out of the mounting package . Screw the end of the NIPPLE (4) into the center hole of the MOUNTING BRACKET (2) and thread both 1/8" IPS HEX NUT(5) several turns onto each end of the NIPPLE(4) but do not tighten the 1/8" IPS HEX NUTS (5). Pull the SUPPLY WIRES (9 & 11) and the SUPPLY GROUND WIRE (8) out from the OUTLET BOX (1) and attach the MOUNTING BRACKET (2) assembly to the OUTLET BOX (1) using the slotted holes of the MOUNTING BRACKET (2) and the MOUNTING SCREWS (3) provided.
2. Adjust the length of STEEL WIRES (21) by pushing the KNOB (20).
3. Feed the POWER CORD (22) up through the CONNECTOR (16), CANOPY (15) and NIPPLE (4).
4. Attach the power supply wires to the fixture lead wires by connecting the BLACK SUPPLY WIRE (9) to the SMOOTH FIXTURE LEAD WIRE (10) and the WHITE SUPPLY WIRE (11) to the RIBBED FIXTURE LEAD WIRE (12). Loop the FIXTURE GROUND WIRE (7) around the GROUND SCREW (14) of the MOUNTING BRACKET (2). (Note: Be sure to provide an extra 3" length of the GROUND WIRE(7).) Connect the remaining FIXTURE GROUND WIRE (7) to the SUPPLY GROUND WIRE (8) using a WIRE CONNECTOR (13). Place wiring and connections inside the OUTLET BOX (1).
5. Place the CANOPY (15) over the OUTLET BOX (1) and secure it in place by screwing the CONNECTOR (16) onto end of the NIPPLE (4).
6. Slide the CANDLE SLEEVES (18) over the SOCKETS (17).
7. Screw light bulbs into the sockets and make sure they do not exceed the maximum wattage specified on the fixture's wattage rating label, **MAXIMUM 60W.**

INSTALLATION IS NOW COMPLETED

FIG.



- | | | |
|------------------------|------------------------------|-------------------|
| 1. OUTLET BOX | 9. BLACK SUPPLY WIRE | 17. SOCKET |
| 2. MOUNTING BRACKET | 10. SMOOTH FIXTURE LEAD WIRE | 18. CANDLE SLEEVE |
| 3. MOUNTING SCREW | 11. WHITE SUPPLY WIRE | 19. FIXTURE BODY |
| 4. NIPPLE | 12. RIBBED FIXTURE LEAD WIRE | 20. KNOB |
| 5. 1/8" IPS HEX NUT | 13. WIRE CONNECTOR | 21. STEEL WIRE |
| 6. SCREW COLLAR LOOP | 14. GROUND SCREW | 22. POWER CORD |
| 7. FIXTURE GROUND WIRE | 15. CANOPY | |
| 8. SUPPLY GROUND WIRE | 16. THREADED RING | |