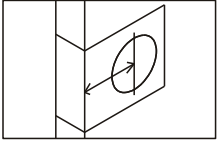


INSTALLATION GUIDE

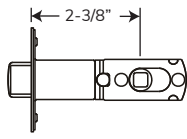
Keyed Entry

Bravura®

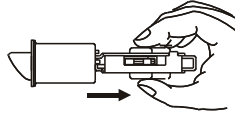
Adjust & Install Latch



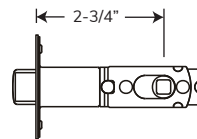
Backset is distance from edge of door to center of hole on door face.



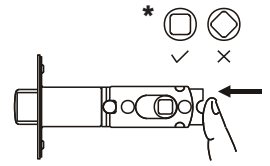
Factory default set to 2-3/8" (60mm) backset.



To adjust to 2-3/4" (70mm), keep spindle cam in squared position and pull to right.

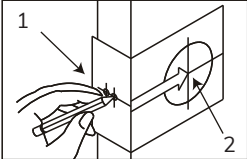


To reset to 2-3/8" backset, keep spindle cam to left. ***Keep cams in square position.**

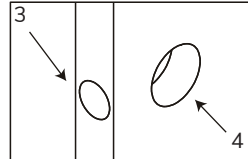


Prep for Wood Door

Cut out the TEMPLATE below and use for steps below.

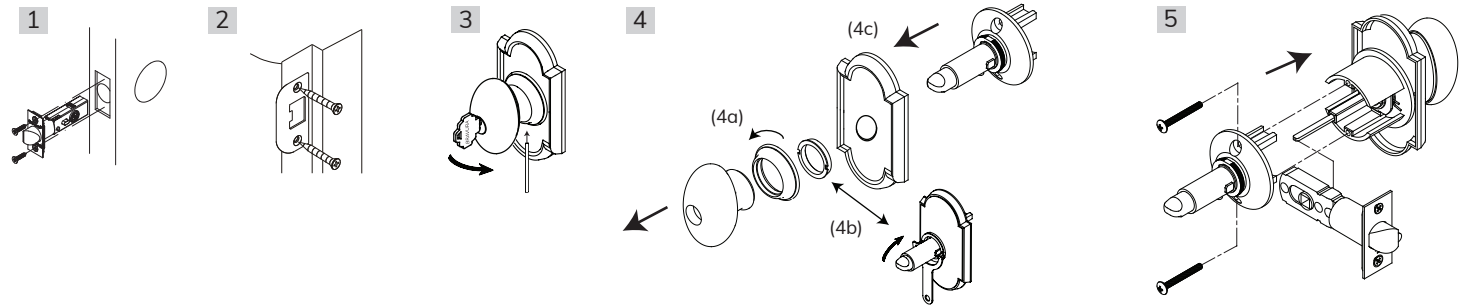


1. Start 38" (965mm) from floor. Fold and apply template. Mark center of door edge.
2. Using either 2-3/8 or 2-3/4" backset as desired, mark center of hole on door face.



3. Drill 1" (25mm) hole for latch.
4. Drill 2-1/8" (54mm) hole on door face from both sides to avoid wood splitting.

Lock Installation



1. Insert Latch in hole on door edge. Hand tighten screws.
2. Place strike on door jamb. Hand tighten screws.
3. Remove lever/knob by loosening set screw with provided hex wrench.
4. Hand loosen & remove beauty ring (4a) by turning counter clockwise. Unscrew locking ring (4b) using spanner tool provided. Remove rosette (4c).
5. With the notch on the lock body facing down, slide the interior and exterior portion of the lock together through the door. If the mechanisms do not slide together easily, rotate the privacy button 90 degrees (horizontal or vertical). Insert screws into the interior escutcheon and hand tighten. Screws should be at exactly 12:00 & 6:00 position & lock should work properly when turning the privacy button and key.
6. To complete installation, re-install rosette. Tighten locking ring with spanner tool. Hand tighten beauty ring. Install knob/lever with set screw.

TEMPLATE

Fold on dotted line and fit on door edge

45 40 35
1-3/4" 1-9/16" 1-3/8"

Make 1" (25.4mm) hole at center of door edge.

FOR BACKSET 2-3/4" (70mm)

FOR BACKSET 2-3/8" (60mm)

Ø 2-1/8" (54mm)

