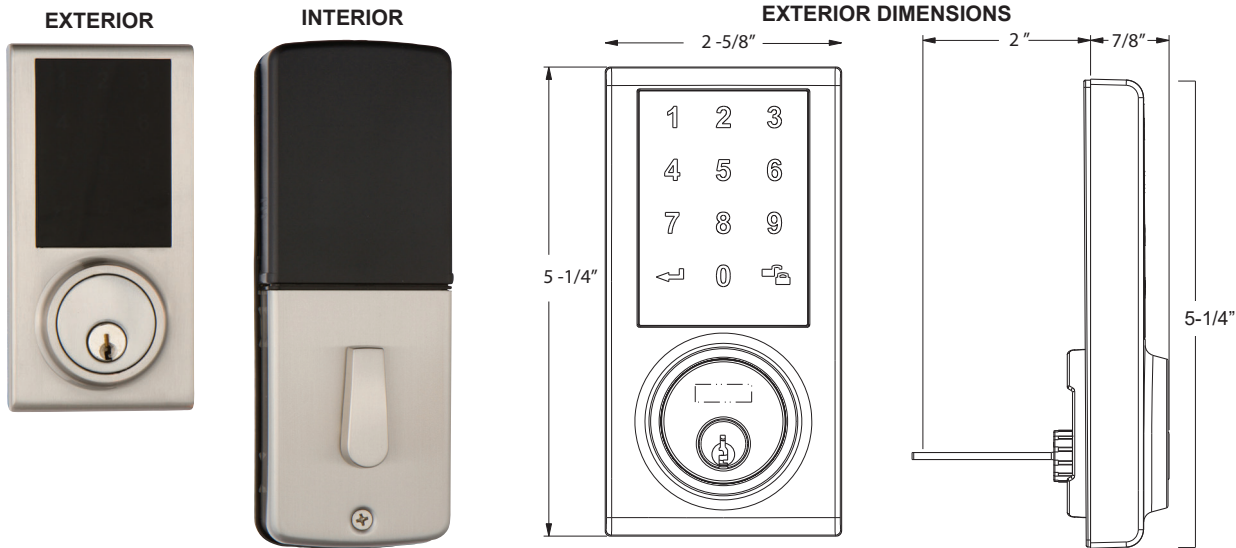


ZW300

Z-WAVE TOUCHSCREEN SMART DEADBOLT *NEW*



Door Prep	Cross bore: 2-1/8" Edge bore: 1" Latch face: 1" x 2-1/4"	Dimensions	Exterior Unit: 5-1/4" x 2-5/8" x 7/8" (H x W x D) Interior Unit: 7-1/2" x 2-7/8" x 1-1/16" Z-wave Camera: 5" x 2"
		Door Thickness	1-3/8" ~ 2" door
Backset	Fits 2-3/8" and 2-3/4", Adjustable	Power	6V (4 AA batteries required. Estimated battery life, 1-year)
Strike	9118R & 9117	Entry Methods	Touchscreen, Conventional Key & Smart Control App when used with Z-Wave camera Gateway
Throwbolt	1" for maximum security	Passcode	Maximum of 30 User Passcodes & 1 Master code supported
Cylinder	KW1 5-pin standard. SC1 5-pin optional. Packed KD.		



Model	Function	WT/ CTN	CTN QTY		US15 Satin Nickel	US26 Bright Chrome	US19 Black	US12P Tuscany Bronze
ZW300	ZWAVE Touchscreen Deadbolt	20 Lbs	6 Pcs	Item No.	301771	301776	301779	301777
				List Price				
ZW310	ZWAVE Touchscreen Deadbolt with Camera Gateway	20 Lbs	4 Pcs	Item No.	301771C	301776C	301779C	301777C
				List Price				
ZW100	Z-Wave Camera Gateway	20 Lbs	10 Pcs	Item No.	301700 (White finish only)			
				List Price				

Main Delaney Smart Home Components



ZWAVE Touchscreen Deadbolt
(Item #ZW300)



Video Camera Z-Wave Bridge Gateway
(Item #ZW100)



Delaney's FREE Smart Home Control App



Z-Wave Plus Certified
Capable of connecting with thousands of Z-Wave Plus devices.