



**PRODUCT DESCRIPTION**

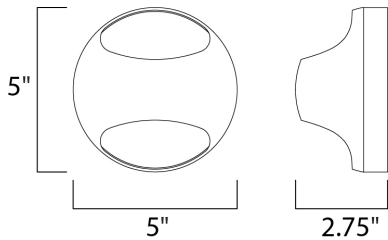
Modern art meets modern light, the Wink collection combines form and function in a unique, wall-mounted hemisphere. Powerful, yet hidden, Xenon lamps spill light through elliptical windows in the dome refracting and diffusing the warm glow. In Polished Chrome, reflections radiate and add to the dance of light while a Satin Nickel finish creates a more subtle effect and Matte Black makes an understated impact.

**MEASUREMENTS**

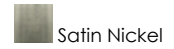
DIMENSION : 5" W x 5" H x 2.75" Ext  
 MAX OAH : 5" W x 1" H  
 HANGING WEIGHT : 0.5 lb

**LAMPING**

INPUT VOLTAGE : 110-130V  
 LUMENS : 280 Rated  
 BULB : 1 x 4W LED AC Integrated , 4W Total  
 BULB INCLUDED : (Integrated)  
 DIMMABLE : Triac CL  
 CRI : 80+ CRI  
 COLOR\_TEMP : 3000K  
 LIGHTING\_DIRECTION : Indirect



**FINISHES OPTION**



**MATERIAL**

Steel

**RATINGS**

cETLus  
 Damp Location  
 ADA



**ADDITIONAL**

ADJUSTABLE  
 INSTALL UP/DOWN: All  
 RATED LIFE 25000 Hours  
 OPERATING TEMPERATURE:  
 -20°C (-4°F), 40°C (104°F)

PHOTOMETRIC: Report Found Online

Always consult a qualified electrician before installing any lighting product.