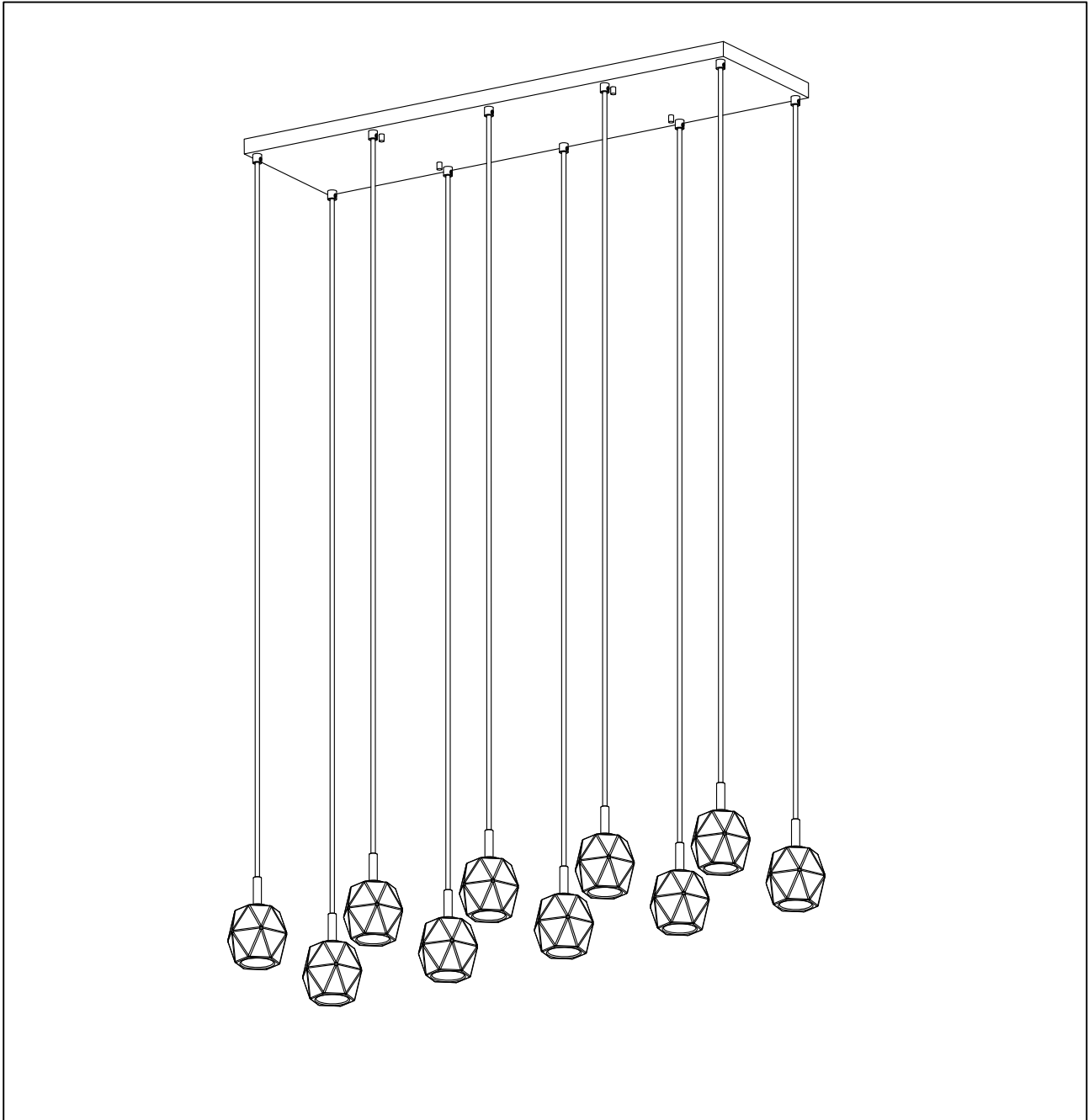




Contemporary Lighting

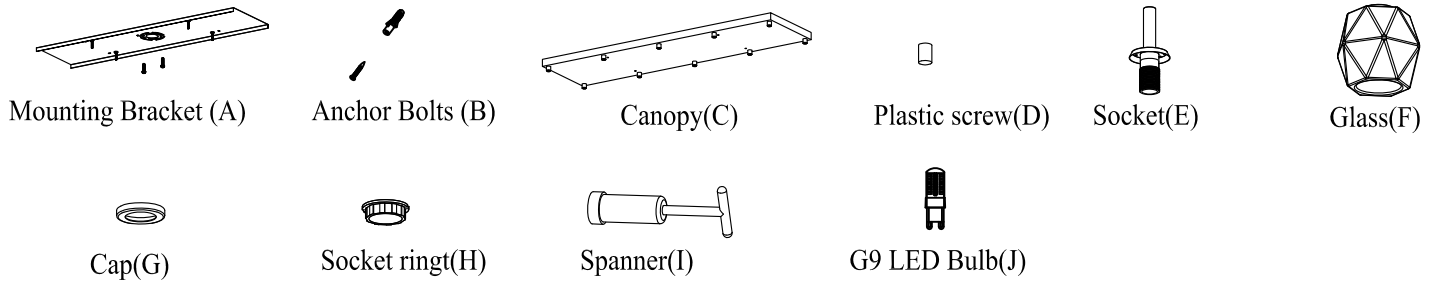
PRODUCT NAME: Bravado
ITEM NUMBER: E20719-82PC

Please consult your electrician for hanging fixture and wiring.

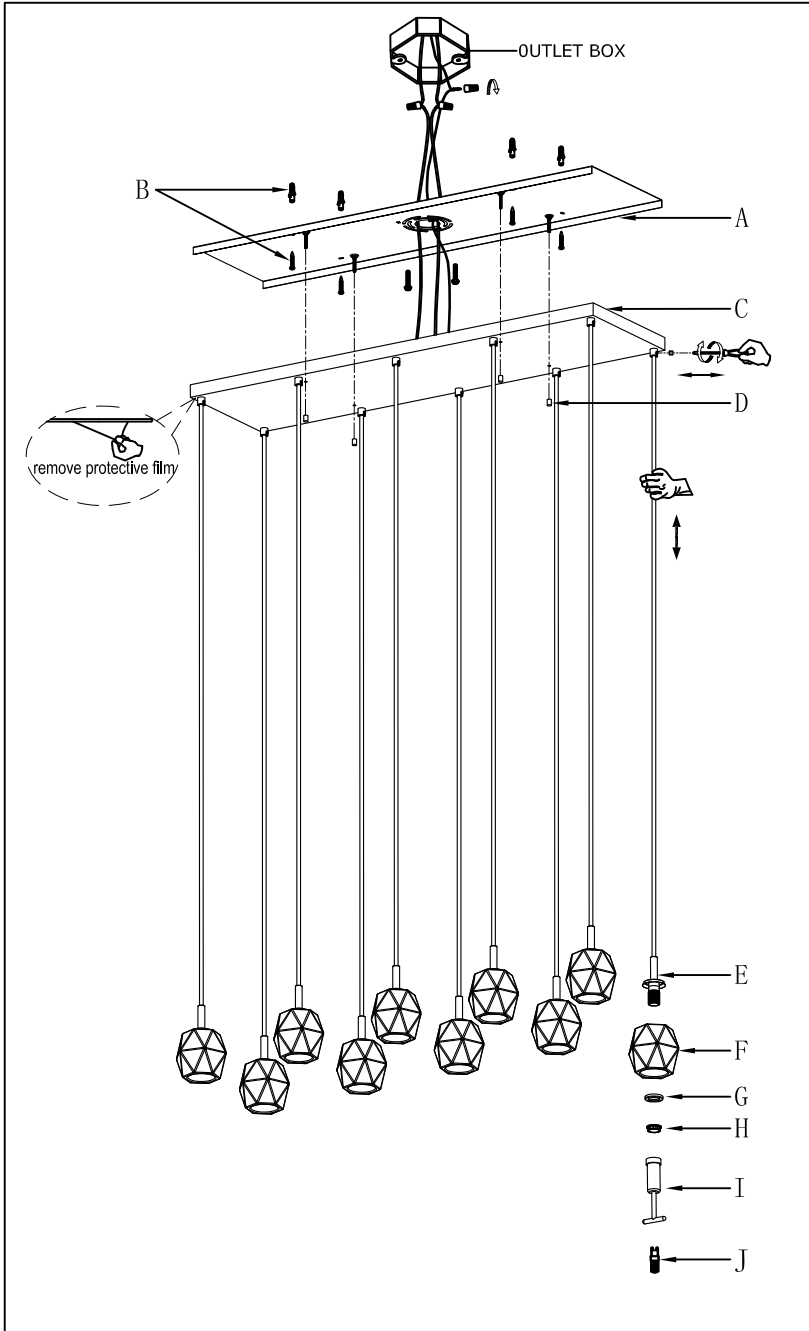


Bulbs (Included): 10 x 4W G9 LED

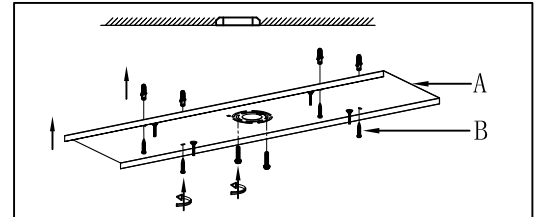
IMPORTANT: Turn off the power at the main fuse or circuit breaker box before starting installation



Locate all hardware & components before discarding packaging

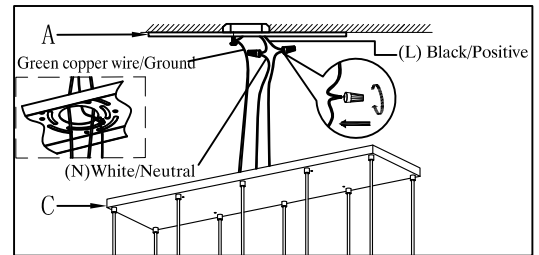


1.)



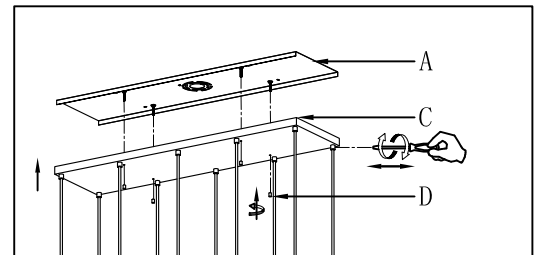
Step.1: Place the mounting bracket(A) up against the ceiling, and over the outlet box in the desired position. Drill holes, insert anchor bolts(B) into the holes until they are tightened together.

2.)



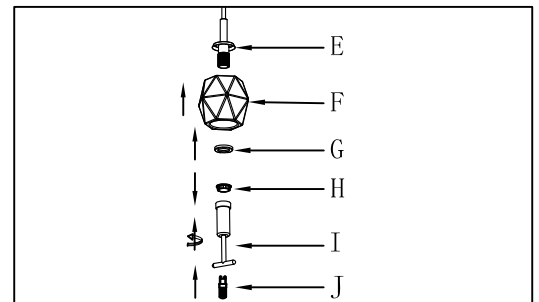
Step.2: Wire fixture to wires in outlet box. Green copper wire is for ground. And carefully position all wires inside the outlet box.

3.)



Step.3: Adjust the fixture wire to the desired length, Place canopy(C) to mounting bracket(A), then tighten plastic screw(D) back into the hole as shown in diagram.

4.)



Step.4: Install Glass(F)/Cap(G) onto socket(E). Install socket ring(H) onto socket (E) by spanner (I). Then install G9 LED bulb (J) into socket(E).

Cleaning & Care:

Clean with soft cloth and a mild detergent.
Do not use abrasive cleaner.