

Kwikset



CASEY LEVER

The Casey Lever combines the strength and durability of a Kwikset product in stylish & contemporary design. The contours of the lever makes it feel comfortable without sacrificing features. Available with Smartkey Security and Microban on select finishes. It comes in either a round or a square rose, providing alluring aesthetics.



Casey Lever with Smartkey Security
round rose in Matte Black



Casey Lever with SmartKey Security
square rose in Polished Chrome

#1 SELLING U.S. LOCK BRAND*

*Source: TraQline US quarterly brand unit share report, Q4 2006 through Q2 2020

Specifications

Door Prep	Cross Bore 2-1/8" or 1 1/2". Edge Bore 1"
Backset	Adjustable 2 3/8" or 2 3/4"
Door Thickness	1 3/8" - 1 3/4" Doors standard
Cylinder	SmartKey Security™
Faceplates	1" x 2 1/4" Specify round corner, square corner or drive-in
Strikes	1 1/8" - 2 3/4" Square or round corner

ANSI/BHMA	A156.2 Grade 3
UL	20 minute UL fire rating available
Door Handling	Reversible for right or left hand doors
ADA	Satisfy section 4.13.9 ADA requirement
Warranty	Lifetime Mechanical and Lifetime Finish

Functions



Passage/Hall/Closet: Both levers always free.



Privacy/Bed/Bath: Both levers locked or unlocked by push-button inside. Outside lever unlocked by emergency key.

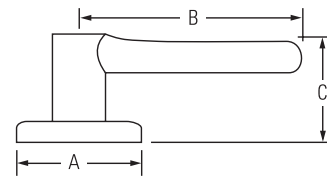


Keyed Entry Lever: Both sides locked or unlocked by key outside or push-button inside.



Half Dummy Trim, Surface Mounted: For doors where only a pull is required. No operation.

Dimensions



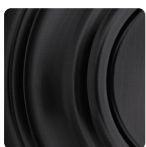
Design	A	B	C	C (Keyed)
Casey Round Rose	2 5/8" (67 mm)	4 1/10" (104 mm)	2 2/5" (61 mm)	2 7/16" (62 mm)
Casey Square Rose	2 5/8" (67 mm)	4 1/10" (104 mm)	2 2/5" (61 mm)	2 7/16" (62 mm)



Kwikset's SmartKey Security™ provides homeowners with the superior security that is resistant to a variety of advanced break-in methods.

This technology also allows homeowners to re-key their locks themselves in seconds, rendering lost or un-retuned keys useless.

Finishes



Matte
Black 514



Satin
Nickel 15



Polished
Chrome 26

