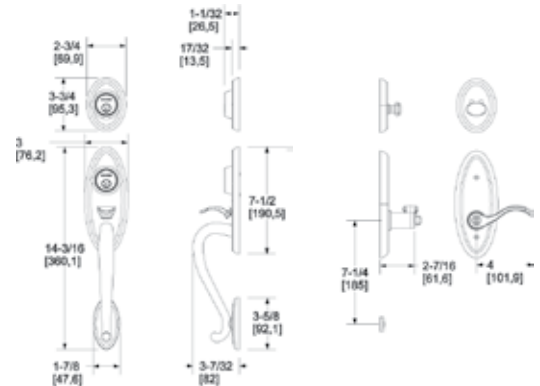


BALDWIN®

ESTATE™

LANDON TWO-POINT LOCK HANDLESET

SHOWN WITH 5225 LEVER IN 150 FINISH

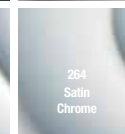
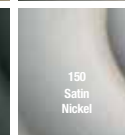
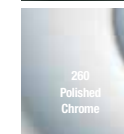
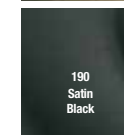
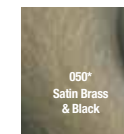
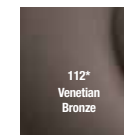


SPECIFICATIONS



- Solid forged brass
- Deadbolt and latch bolt are also constructed of solid brass
- Deadbolt is furnished with specially designed reinforcing strike constructed of high grade steel for ultimate strength and durability
- Designed for easy installation in standard pre-bored wood or metal doors
- Accommodates door thickness of 1.75". Conversion kit available for 2.0" thick doors.
- 5-pin keying cylinder in active sets
- Functions available: single cylinder, double cylinder, full dummy

TIER 1 FINISHES



TIER 2 FINISHES

