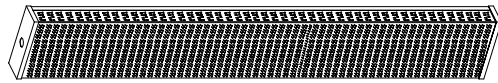


PRODUCT NAME:LED WRAP FLUSHMOUNT FIXTURE
ITEM NUMBER:57523

Please consult your electrician for installing fixture and wiring.

PRODUCT LINE DRAWING

As below physical feature & style



WARNING:TURN OFF ELECTRICITY at main fuse box(or circuit breaker box) before beginning installation by removing fuse(or switching off circuit breaker).

CAUTION:CONSULT A QUALIFIED ELECTRICIAN TO ENSURE CORRECT BRANCH CIRCUIT CONDUCTOR.

If in doubt about electrical installation,consult a licensed electrician.

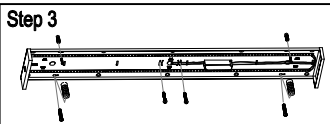
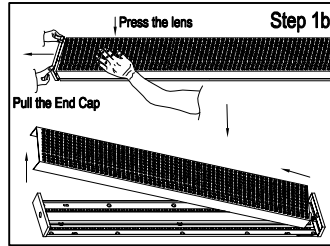
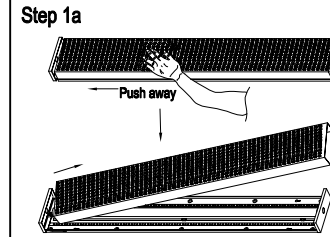
Locate all hardwares & components before discarding packaging.Find all parts available in field in case of failing to assembly.

ALL PARTS CONTENTS

BULBS INCLUDED

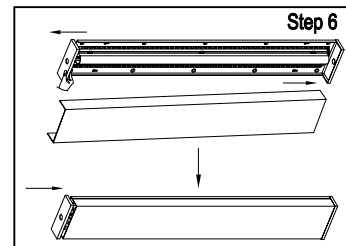
ASSEMBLY INSTRUCTIONS:

IMPORTANT :Turn off the power at the main fuse or circuit breaker box before starting installation.



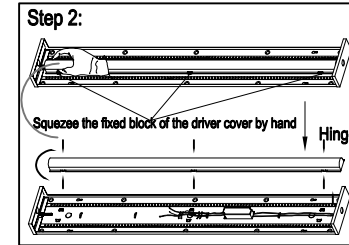
Step 3:Find the optimum intended position to install the fixture.If there is an outlet box on the ceiling,use the 2 pcs 8#-32 screws to fix the fixture first and then nail the 4 tapping screws through the base and into the ceiling .Make sure the screws can support the base securely.

Notes:This Fixture is designed for conduit joint installation instead of outlet box in the normal way.When install the fixture, choice a proper knockout hole on the base for it.

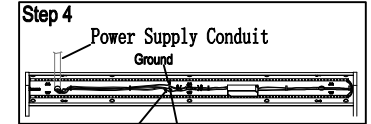


Step 1:When take the fixture out of package box,either Step 1a or Step 1b to take the lens out from the base.Step 1a:Push the lens towards one removable end of the base while press anothe fixed end of the base; Step 1b:Press the lens and pull the removable end cap. Notes:Handle with care in case of breaking the lens.

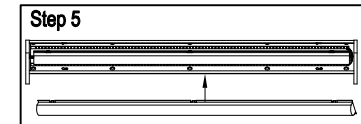
Notes:Removable end cap marked by a label with arrow on the side of base for guidance,don't mixed the direction for installation and maintaince.



Step 2: Squeeze the wiring cover on which is above the 6 hinges out of the base indentation corresponding to the place.



Step 4:Connect white wire(s) from the fixture to the white(neutral) wire of the supply circuit.Connect the black wire(s) from the fixture to the black(live) wire of the supply.Connect the copper wire(s)from the fixture to the ground wire of the supply conduits or outlet box.



Step 5: Route and spread the electrical splices and wires to the middle of base,better through the clips punched on the base to avoid any damaging.Make sure all splices and wires spread in the wiring cover inside.And then put the cover over the base by a reversal operation as Step 2.

Step 6:Pull the removable end cap of the base in an appropriate distance by hand,meanwhile insert the lens to another end cap and lay down the lens compelety in the base.At last release the removable end cap to snap in the base.