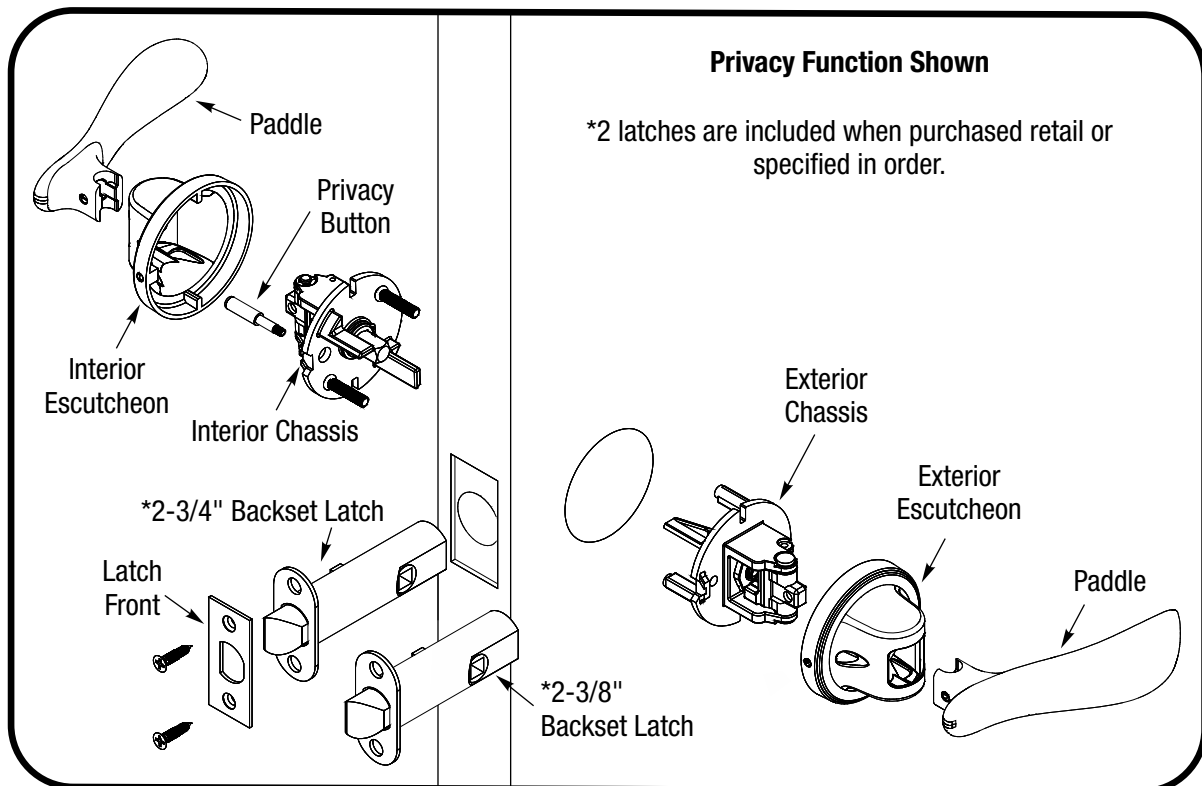
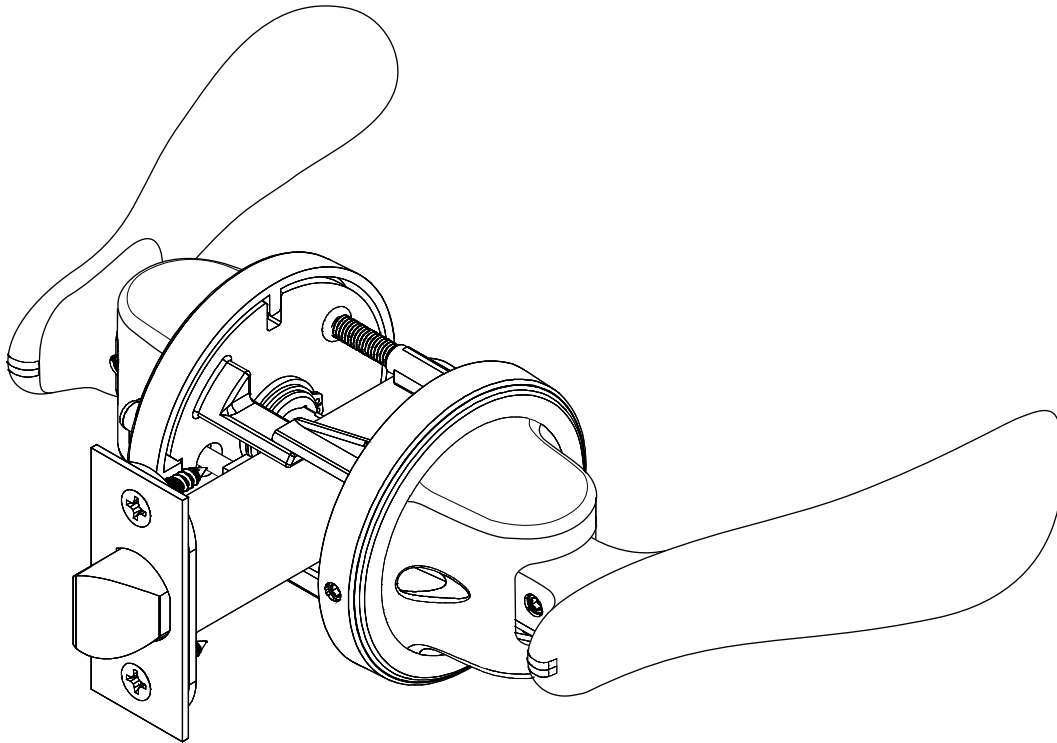


Pivot Collection™ Navis™ Paddle Installation Instructions

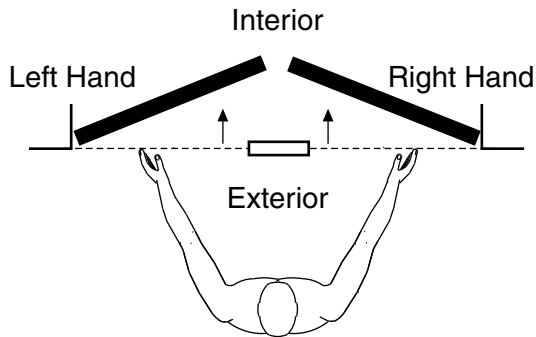


FAILURE TO FOLLOW THESE INSTRUCTIONS COULD RESULT IN DAMAGE TO
THE PRODUCT AND VOID THE FACTORY WARRANTY



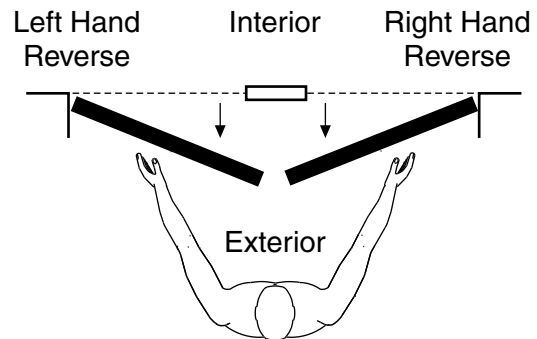
Determine Handing

Inswinging Door

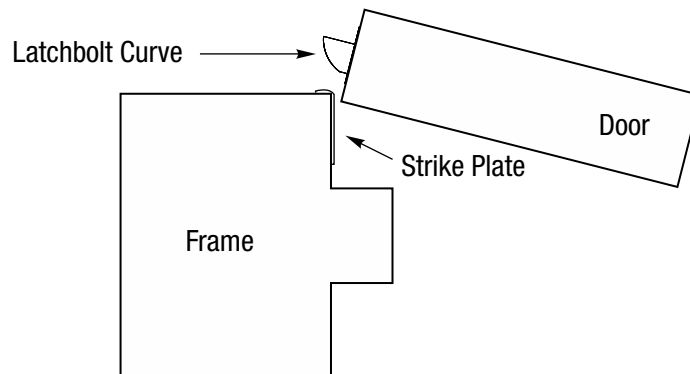


Face a door swinging open **away from** you.
If it swings open to the right, it is a right hand door. If it swings open to the left, it is a left hand door.

Outswinging Door



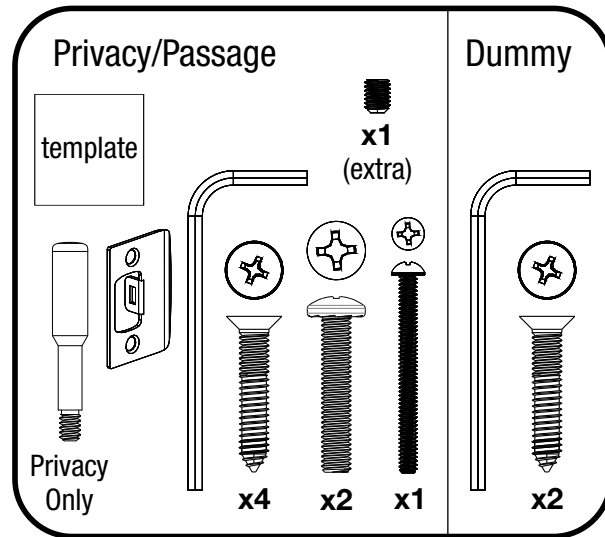
Face a door swinging open **toward** you.
If it swings open to the right, it is a right hand reverse door. If it swings opens to the left, it is a left hand reverse door.



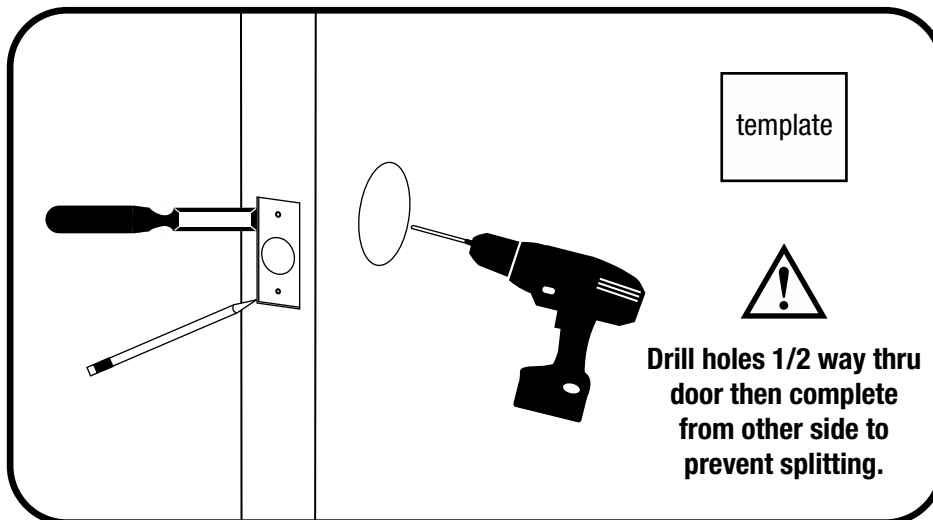
Curve of latchbolt must contact strike plate first.



Before You Begin



1 Prepare Door *(if necessary)*

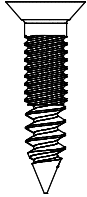


2

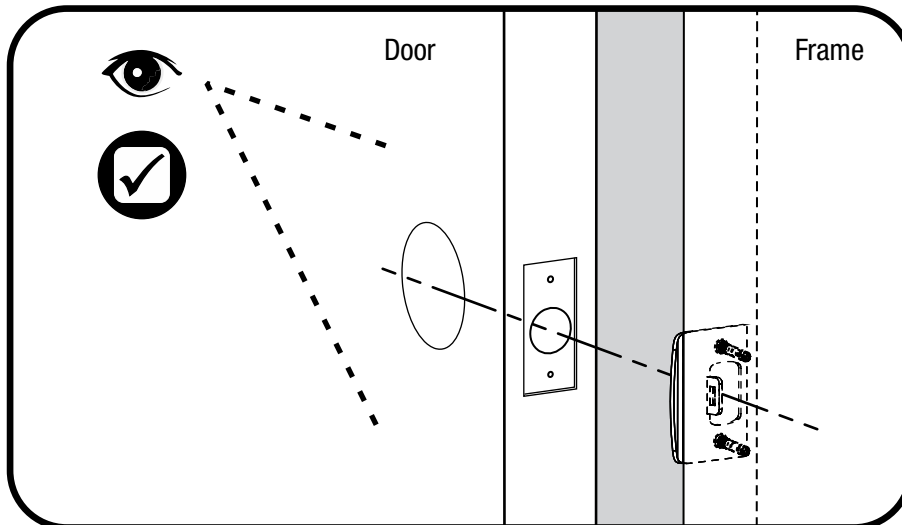
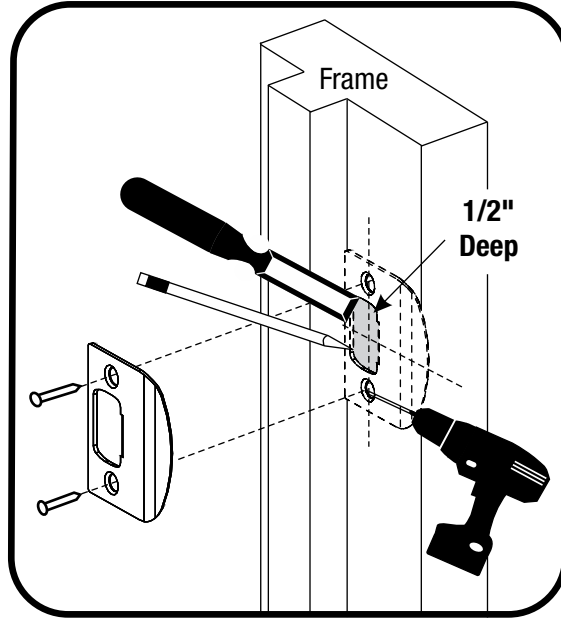
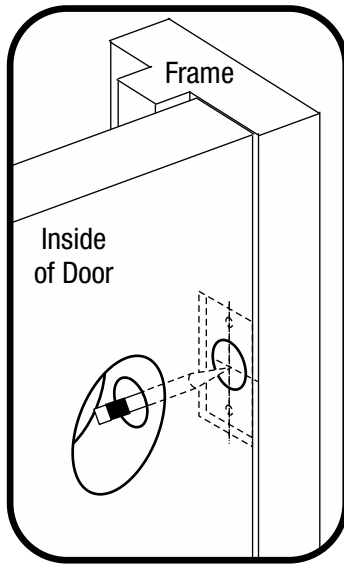
Prepare Frame & Install Strike Plate



7-16/8-32 x 1" PFHMS



x2

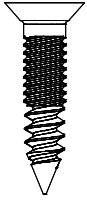


3

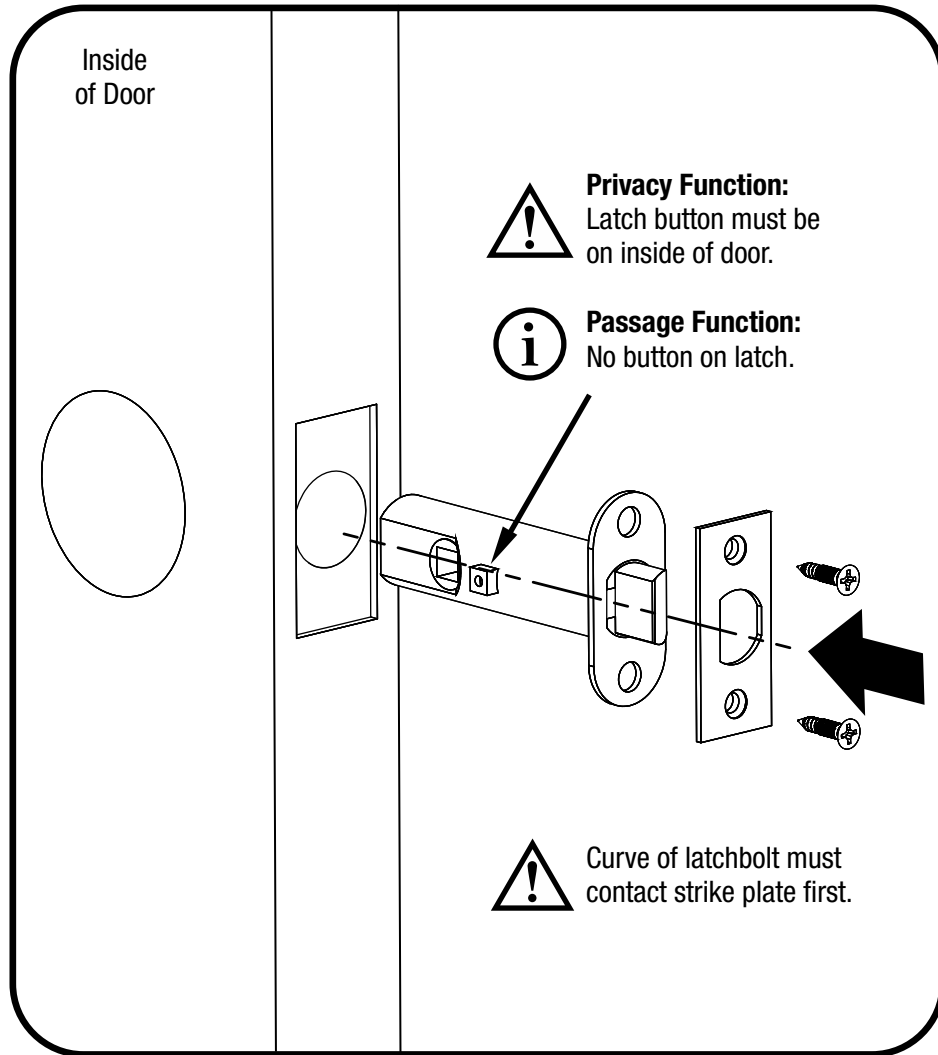
Install Latch & Latch Faceplate



7-16/8-32 x 1" PFHMS



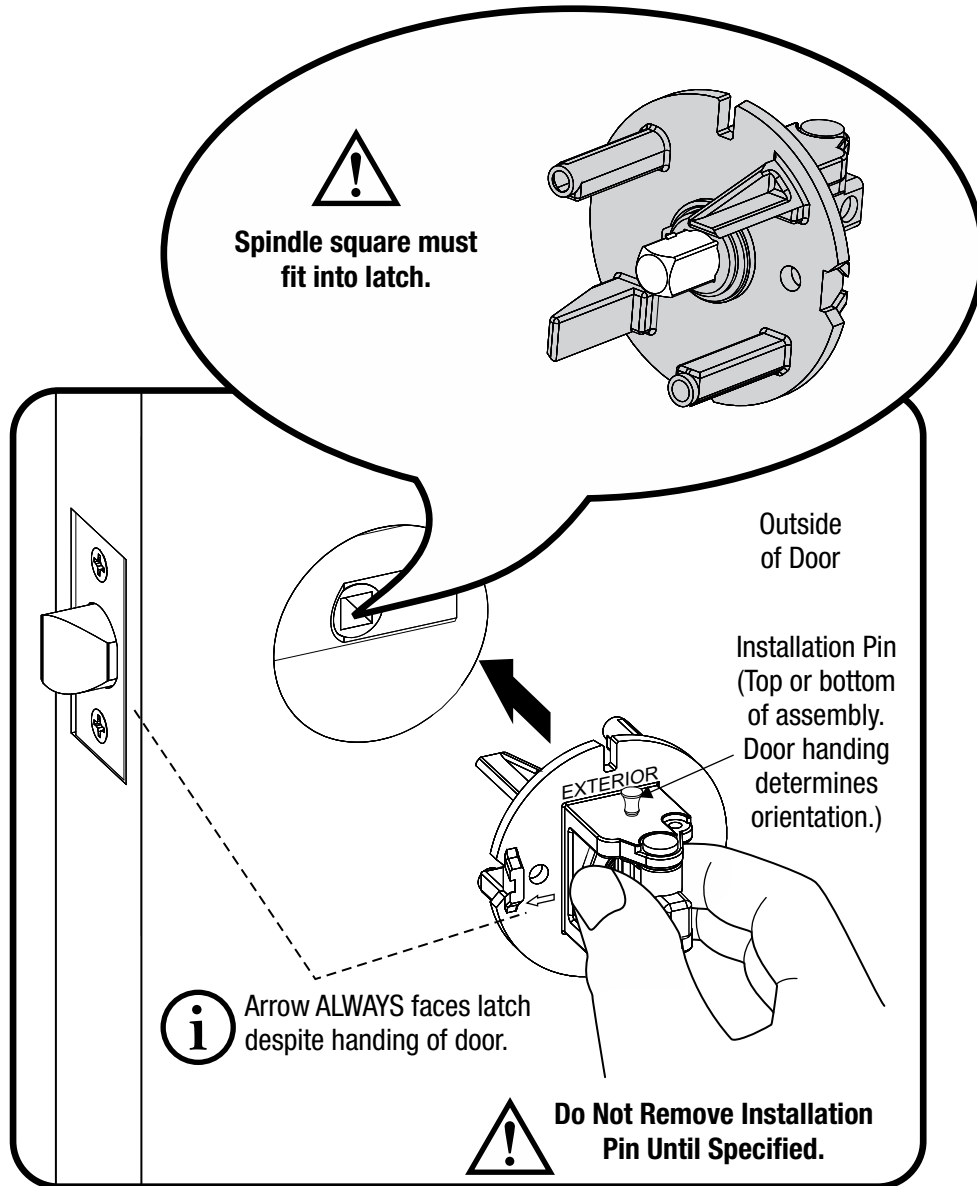
x2



4

Install Exterior Chassis

LH (Left Hand) Door shown



5

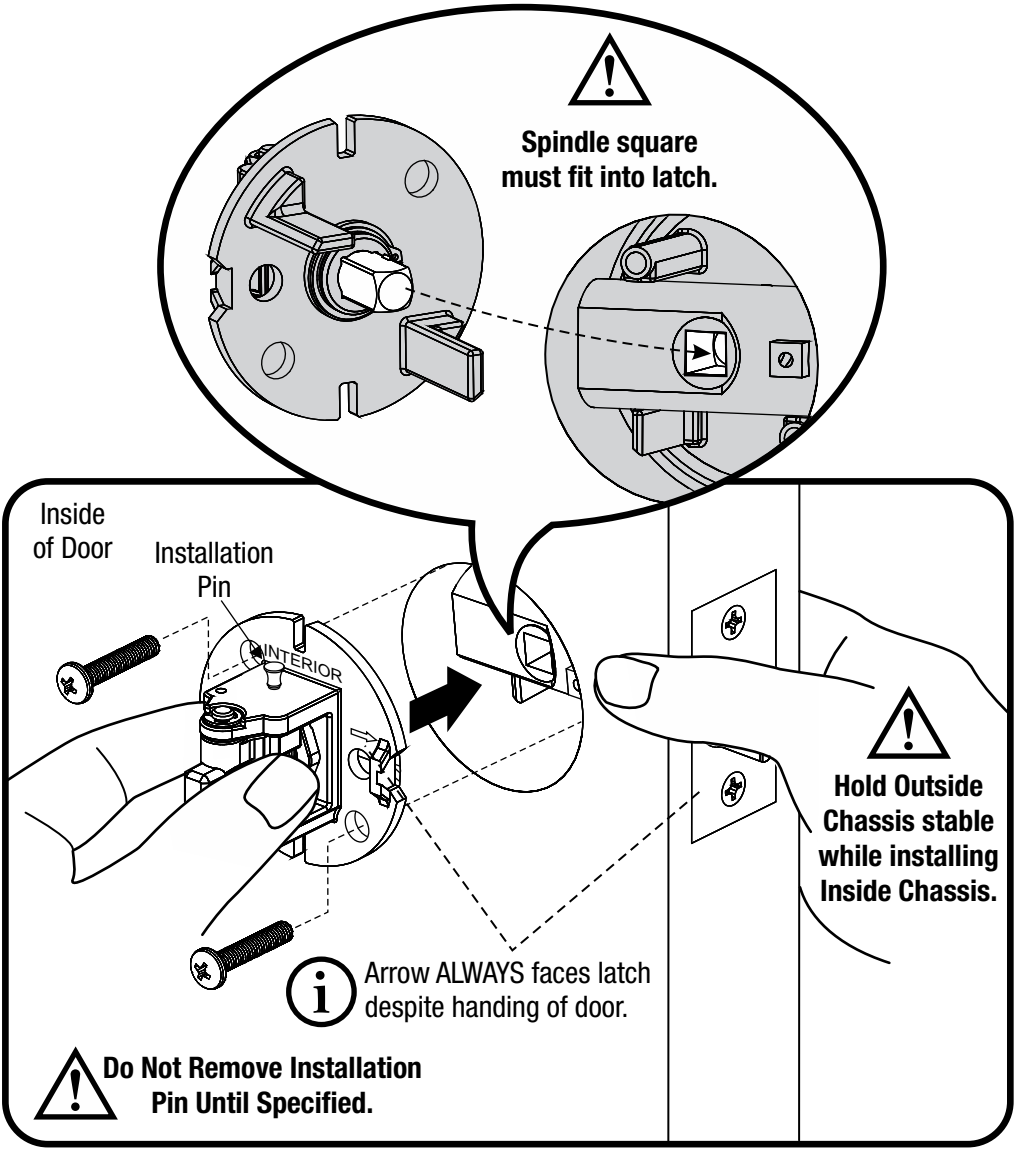
Install Interior Chassis



#10-32 x 1" PPHMS

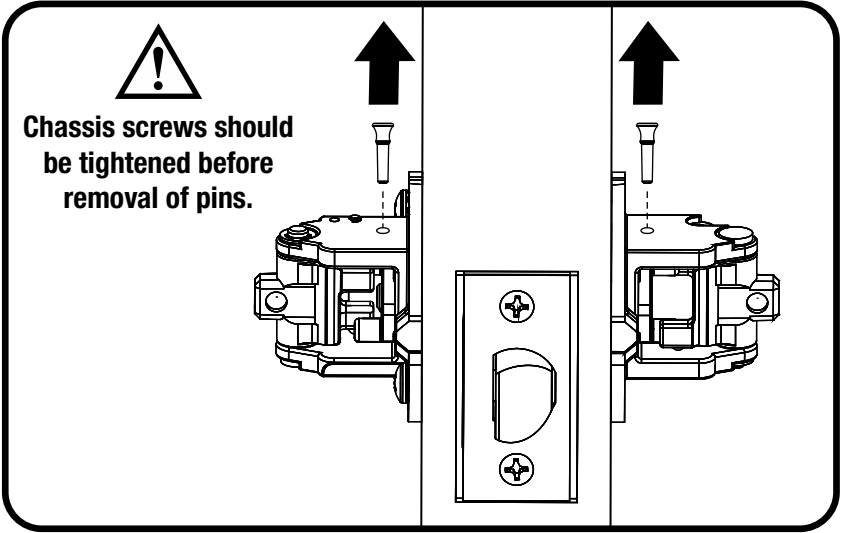


x2



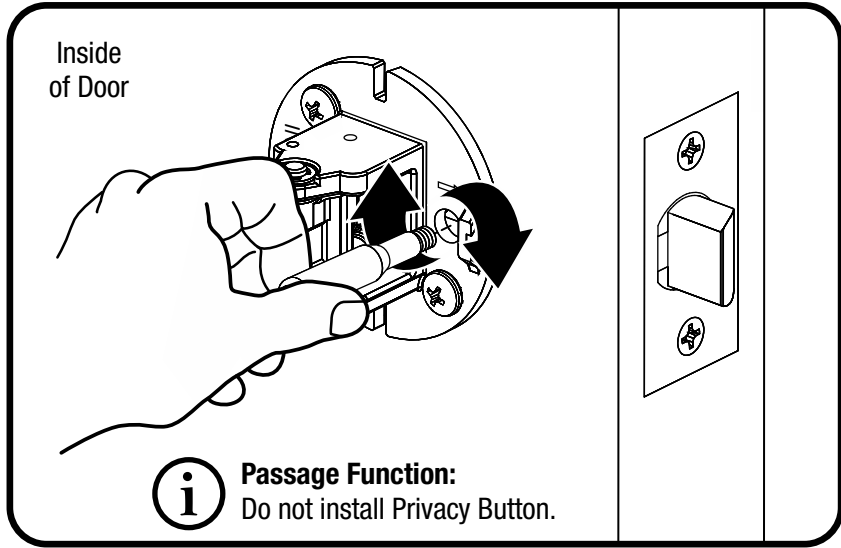
6

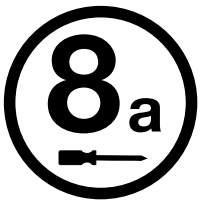
Remove Installation Pins



7

Install Privacy Button (for Privacy Function Only)

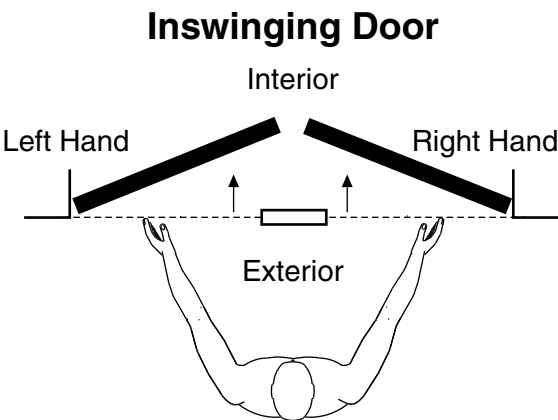




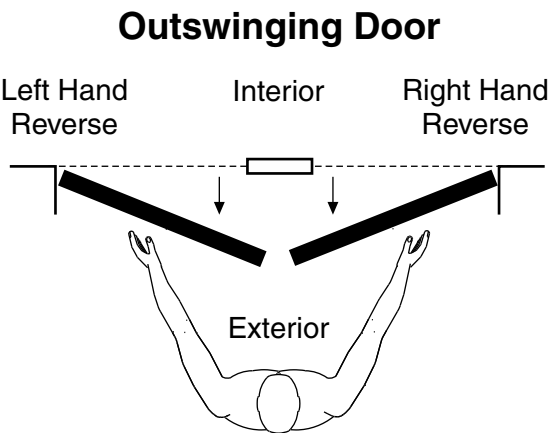
Determining Selector Screw Location to Block Paddle (Optional)

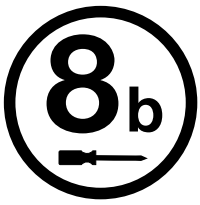
The Selector Screw is used to block PULL function of latch. Once blocked, paddle can be pulled to close door without retracting latch. (Pulling a door closed while retracting latch may result in latch not engaging strike plate and door standing ajar.)

Place Selector Screw on outside of door to select **PUSH** only.



Place Selector Screw on inside of door to select **PULL** only.





Block Paddle (*Optional*)



#4-40 x 1-1/4" Selector Screw



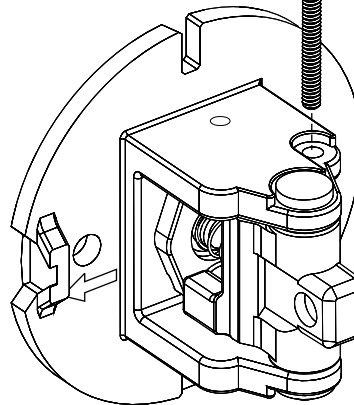
x1



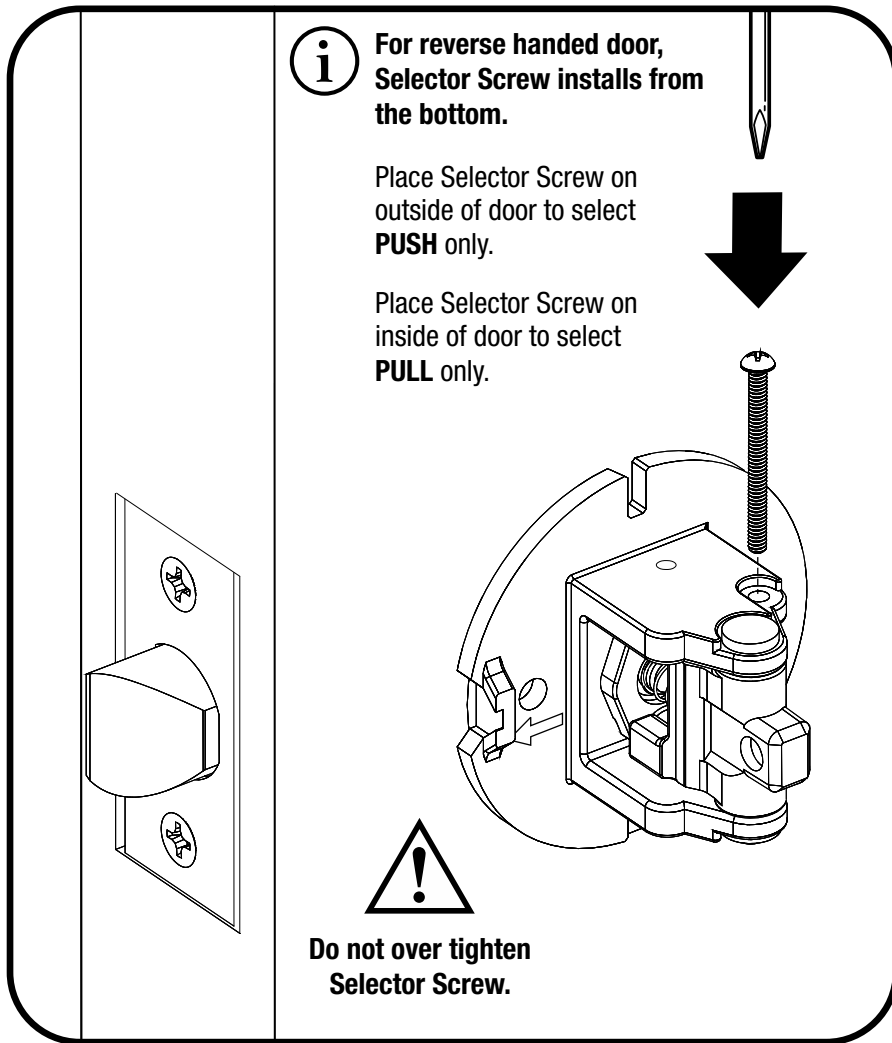
For reverse handed door,
Selector Screw installs from
the bottom.

Place Selector Screw on
outside of door to select
PUSH only.

Place Selector Screw on
inside of door to select
PULL only.

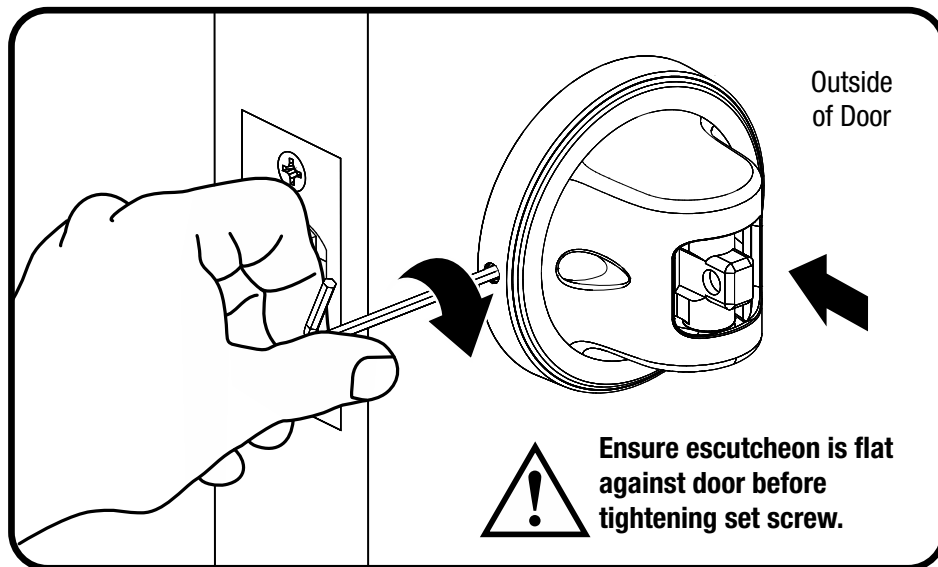
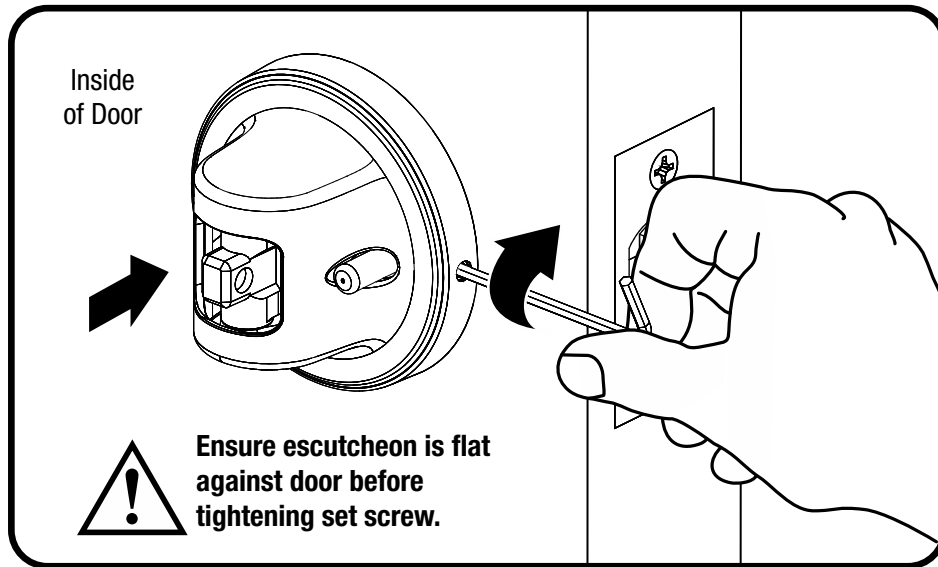


Do not over tighten
Selector Screw.



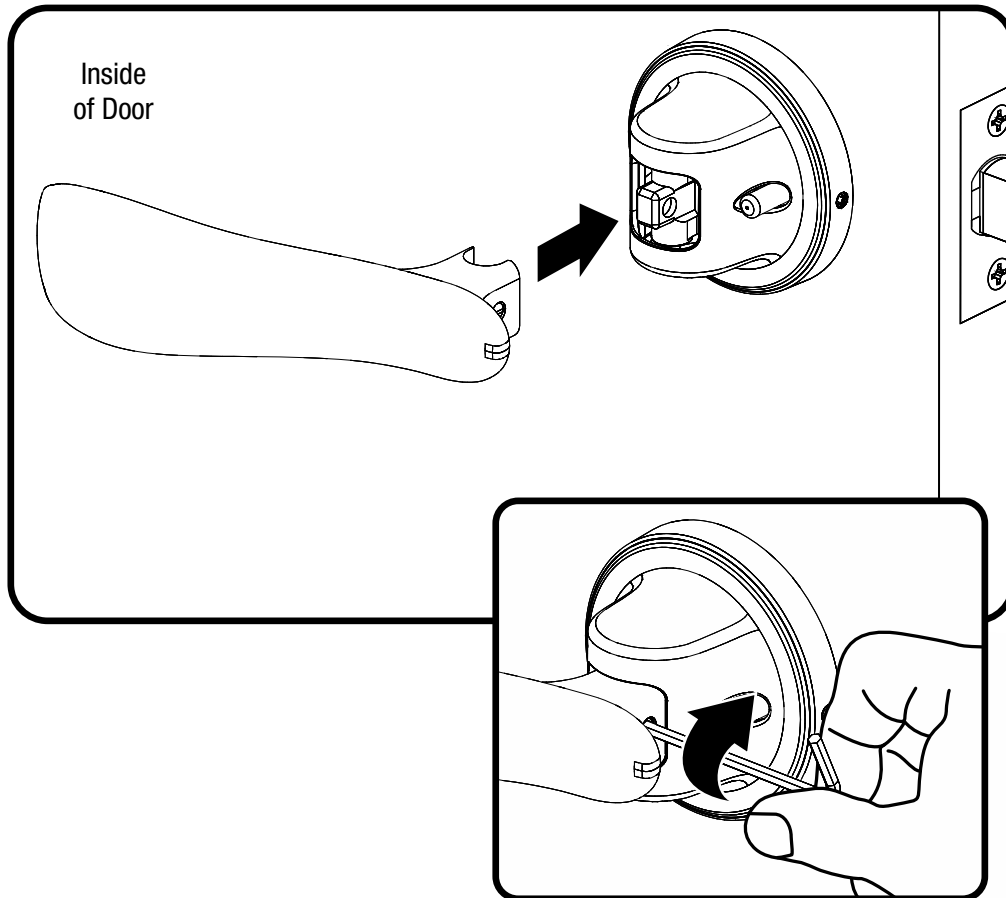
9

Install Escutcheons



10

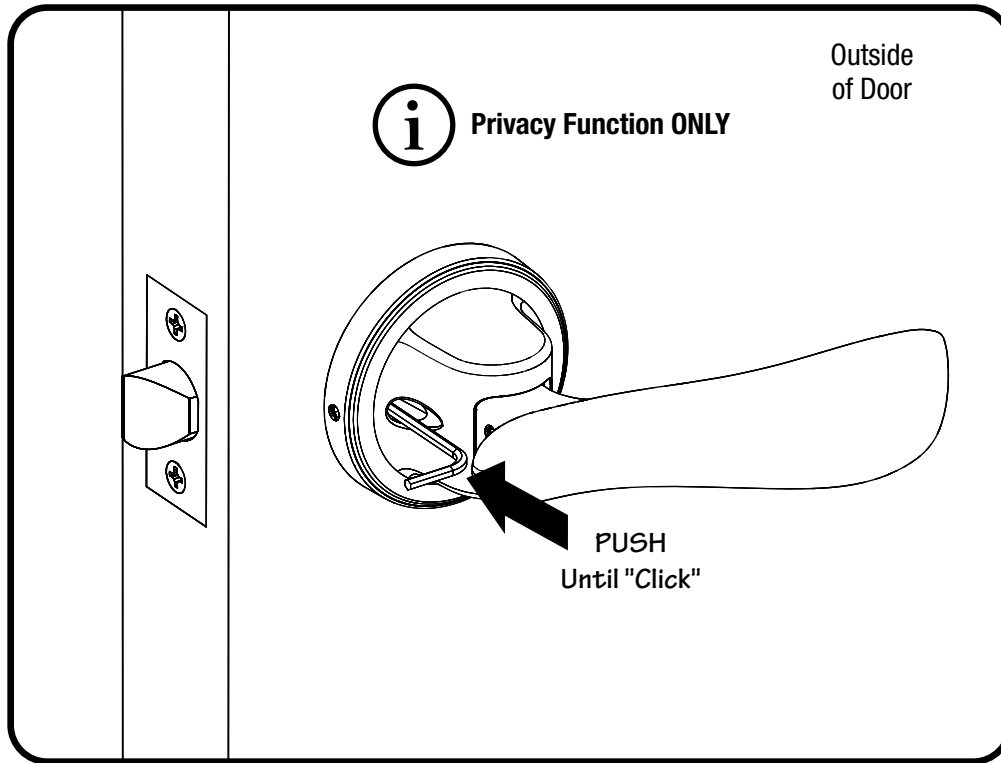
Install Paddles



Repeat for Exterior Paddle

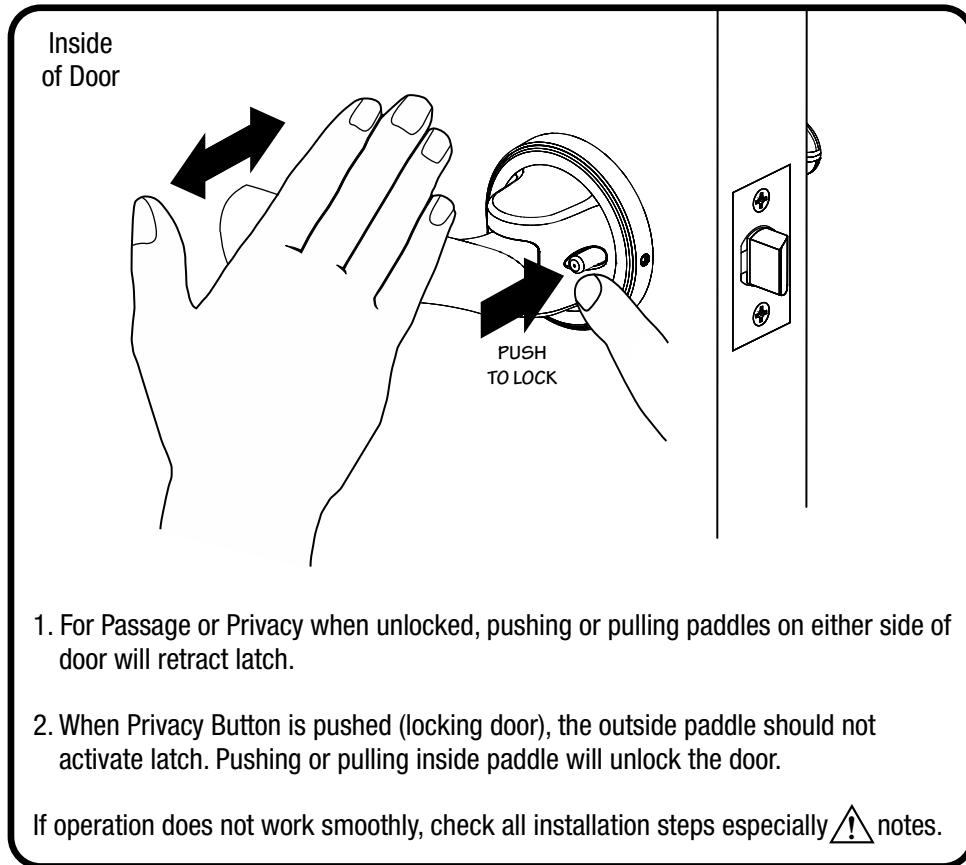


Emergency Release





Test Operation



Congratulations, you've installed the
Yale® Pivot Collection™ Navis™ Paddle!

Yale Locks & Hardware

Yale® is a registered trademark of Assa Abloy Residential Group.
Pivot Collection™ and Navis™ are trademarks of Assa Abloy Residential Group.
© Copyright 2018. All rights reserved.

Reproduction in whole or in part without the express written permission of Assa Abloy Residential Group is prohibited.